



National  
Defence

Défense  
nationale

# **SEXUAL MISCONDUCT** Response Centre **SMRC**

## SMRC 101

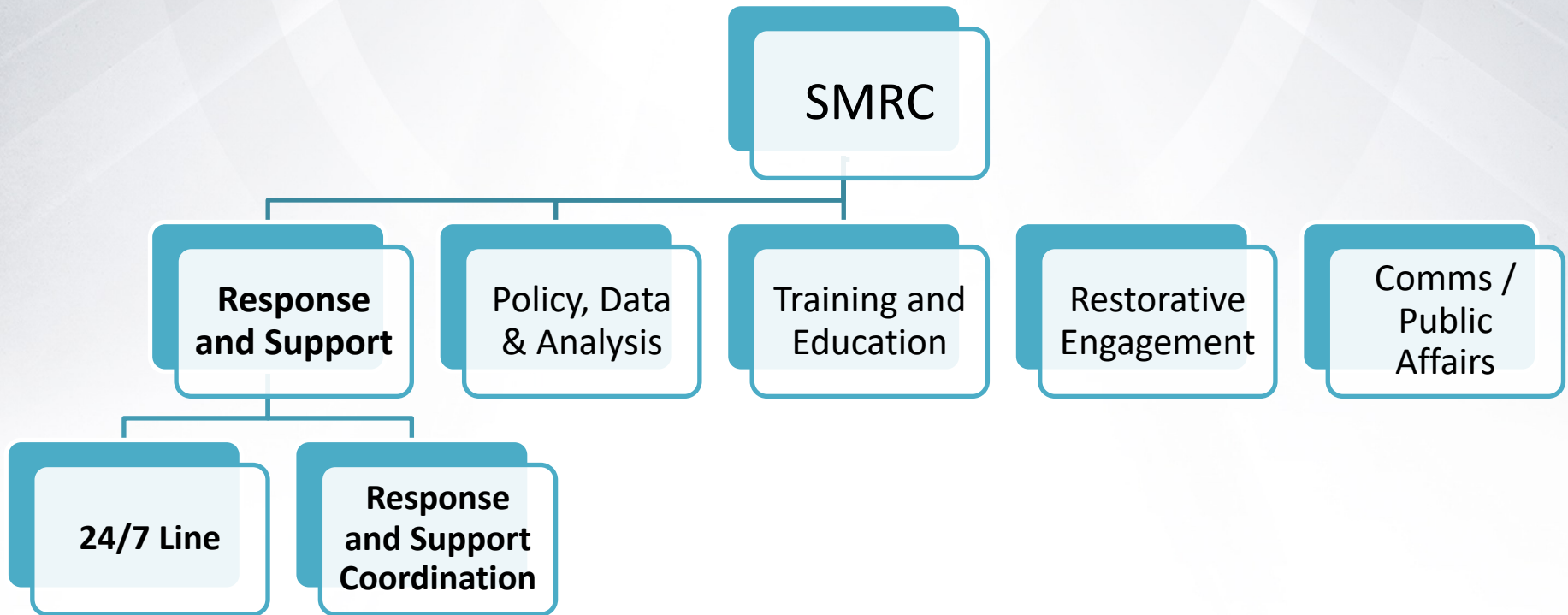
To: Military Sexual Trauma Virtual Symposium



Presented by:

Catherine Gagné MSW, RSW (Senior Counsellor)

June 3<sup>rd</sup> 2021



- Support CAF members who have been affected by sexual misconduct
- Guidance and advice to chain of command
- Provide expert advice and guidance to the CAF on their policies, education, training related to sexual misconduct. Provide independent, external analysis of their efficacy and recommendations for improvement.

- **Unique** mandate focused on sexual misconduct
- **Confidential**
- **Person-centered** approach
- **No duty to report** to chain of command
- **Integrated** military liaison team including a **Military Police Officer**, a **Senior Officer** and a **Senior Non-Commissioned Officer**



Response & Support  
Coordination Program

*During regular work hours*



24 hours/day  
7 days/week

Military  
Liaison Team



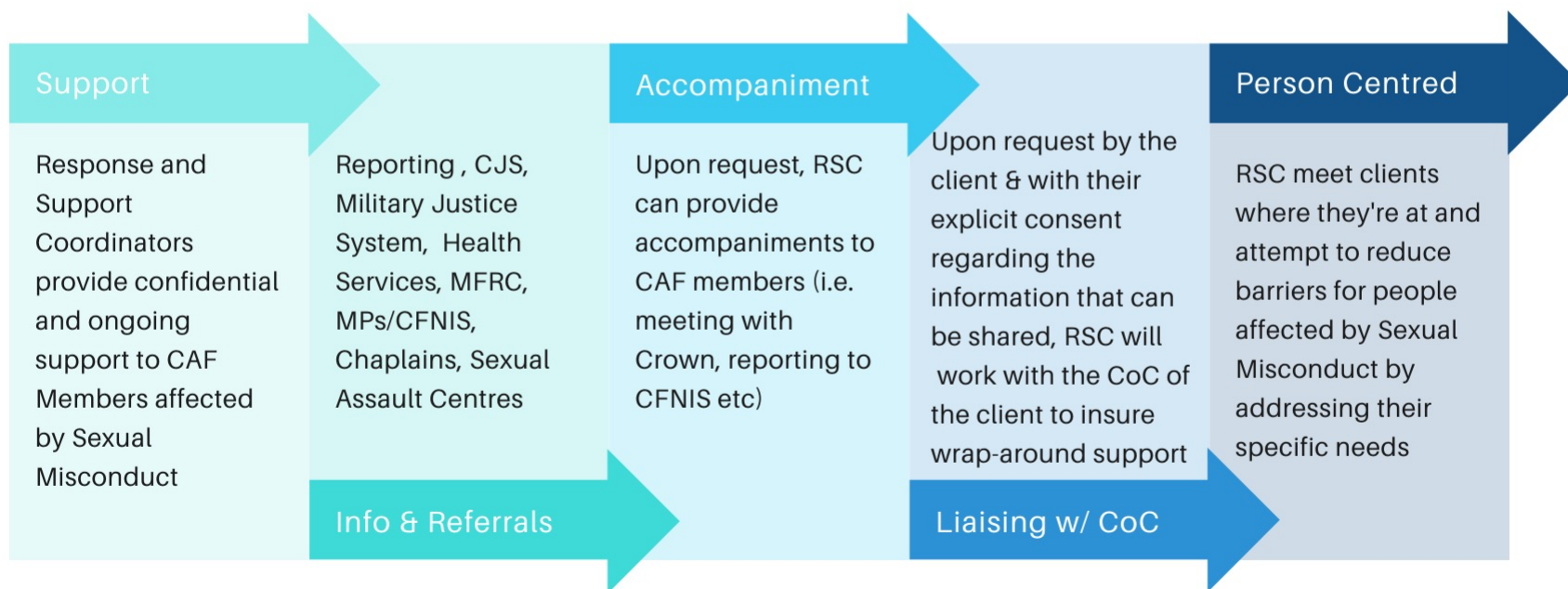
Confidential  
and bilingual

Support



Information  
and referrals

## RESPONSE AND SUPPORT COORDINATION



## **Military Police Liaison Officer (MPLO):**

- Information and advice regarding possible criminal sexual misconduct offences
- Information on the complaint, investigation or military/civilian justice processes and facilitates reporting as applicable

## **Military Liaison Officer / Non-Commissioned Officer (MLOs) :**

- Assists the chain of command on interpreting and applying CAF program, policies and procedures
- Responds to CAF members' questions on military processes

# Reasons for Contact

## Reasons for Contact FY 2020-2021

Reason for Contacts	CAF	Non-CAF
Sexual assault	156	70
Email/phone follow up	135	99
Inappropriate sexual behaviour	95	13
Sexual harassment	68	17
Sexual Misconduct - Unspecified	67	71
Information request	25	13
Outside mandate	13	21



# Impacts of Sexual Misconduct

## Member

- No one typical response or reaction
- Short- and long-term effects
- Sense of betrayal and shock
- Physical, psychological and behavioural impacts
- Strain on inter-personal relationships
- Impacts of reporting can be worse than the incident

## Unit

- Breakdown of team cohesion
- Gossip: everyone has an opinion, but almost no one has all of the facts
- Increased absenteeism

## CAF

- Loss of trust
- Impact on retention
- Risk to operational effectiveness

## 24 hours /7 days



1-844-750-1648 (North America)  
613-996-3900 (collect call)



[DND.SMRC-CIIS.MDN@forces.gc.ca](mailto:DND.SMRC-CIIS.MDN@forces.gc.ca)



[Canada.ca/defence-sexual-misconduct-response-centre](http://Canada.ca/defence-sexual-misconduct-response-centre)